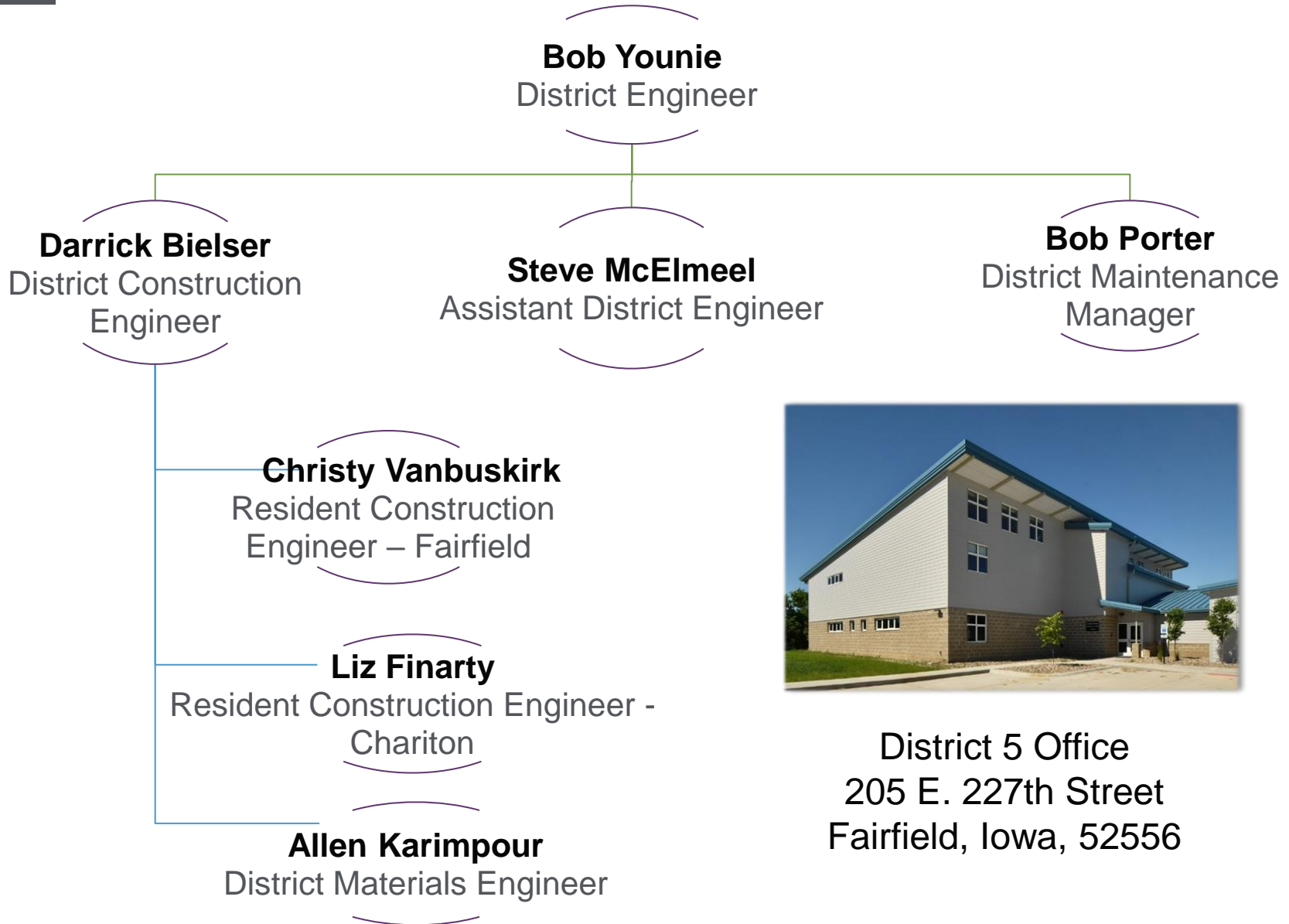


New U.S. 61 four-lane in Des Moines County near the junction with Upper Flint Road and Flint Bottom Road

A graphic consisting of a dark red arrow pointing right, followed by four grey arrows of decreasing size pointing right, all overlapping the bottom of the photograph.

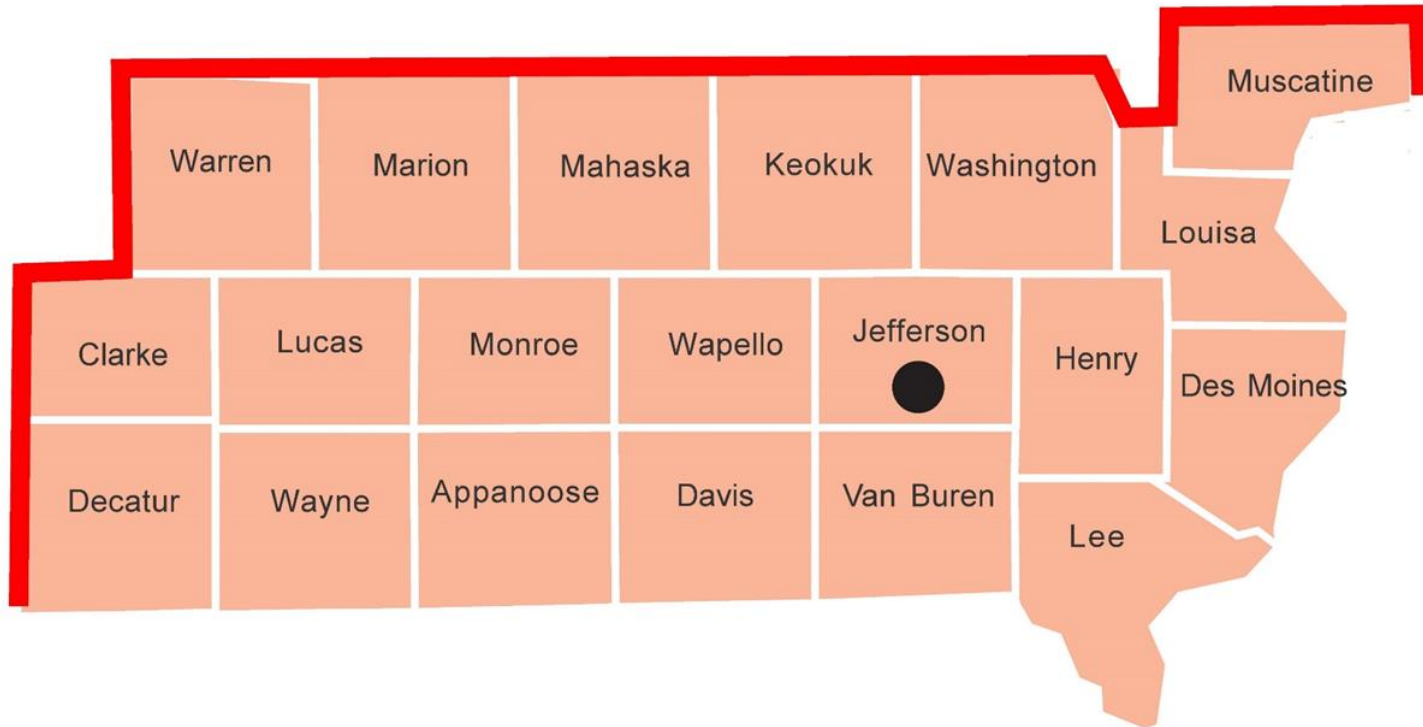
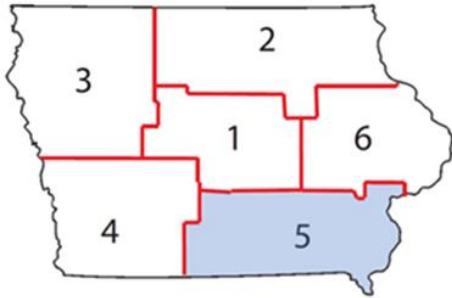
ICPA Annual Workshop
February 7, 2024



District 5 Office
205 E. 227th Street
Fairfield, Iowa, 52556

Iowa DOT - DISTRICT 5

- 20 Counties
- 222 Full time Employees
- 1 Main Office/Materials Lab
- 2 Construction Offices (2 RCE's)
- 16 Maintenance Garages

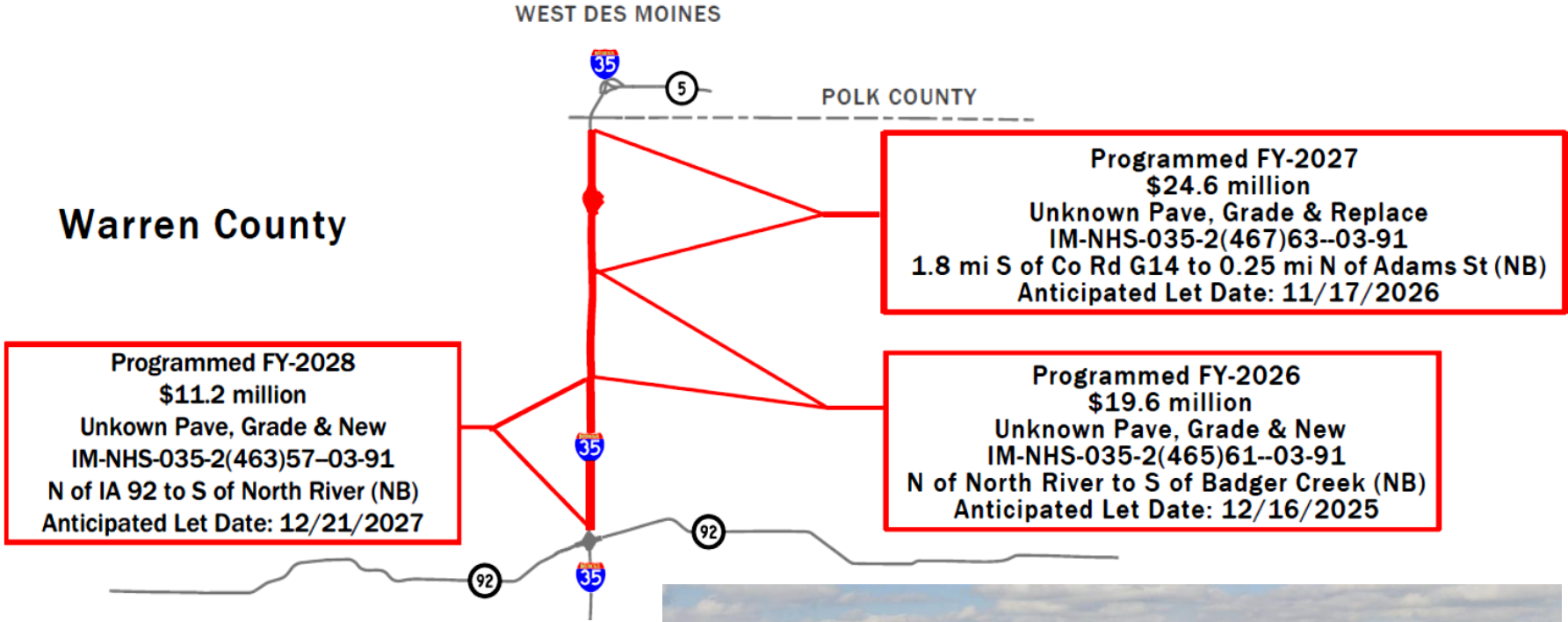


Programmed FY-26 to FY-28: \$55.4 Million Northbound I-35

Warren County

WEST DES MOINES

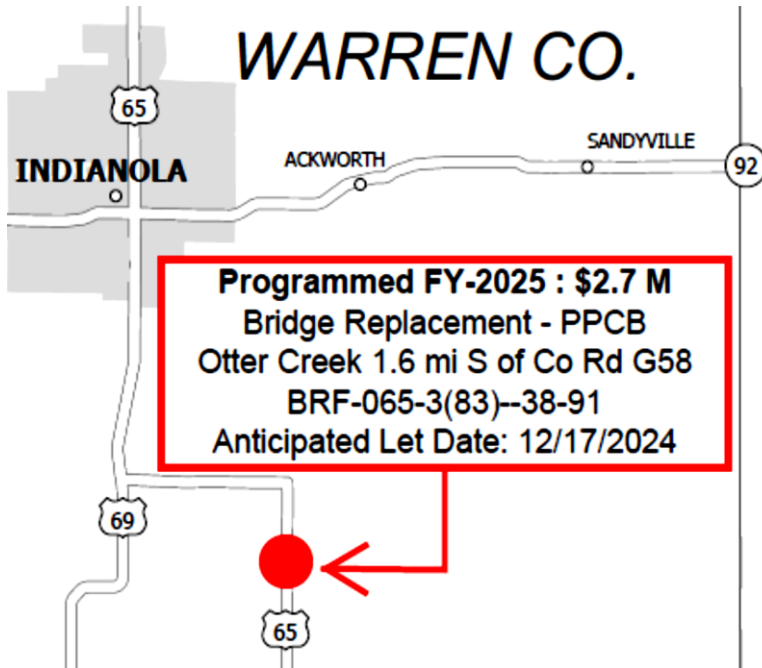
POLK COUNTY



Structure Highway



Programmed FY-25: \$2.7 Million U.S. 65 Bridge over Otter Creek



Right Profile

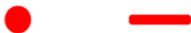


Looking South

This project involves the replacement of the existing 3 span 209' x 28' Prestressed Pretensioned Concrete Beam (PPCB) bridge on U.S. 65 over Otter Creek with a 3 span 239' x 44' PPCB bridge.

Both lanes of US 65 will be closed to traffic for the duration of the project, offsite detour shall be used.

Structure Highway



IA 14 Bridge over Bush Creek



Left Profile (56)



Right Profile (56)

The project involves replacement of the 3 span 320' x 30' continuous welded girder IA 14 bridge, built in 1965, over Brush Creek. The concept proposes a 364' X 44' PPCB bridge. Traffic will be maintained by an off-site detour.

IA 5 Bridge over Walnut Creek



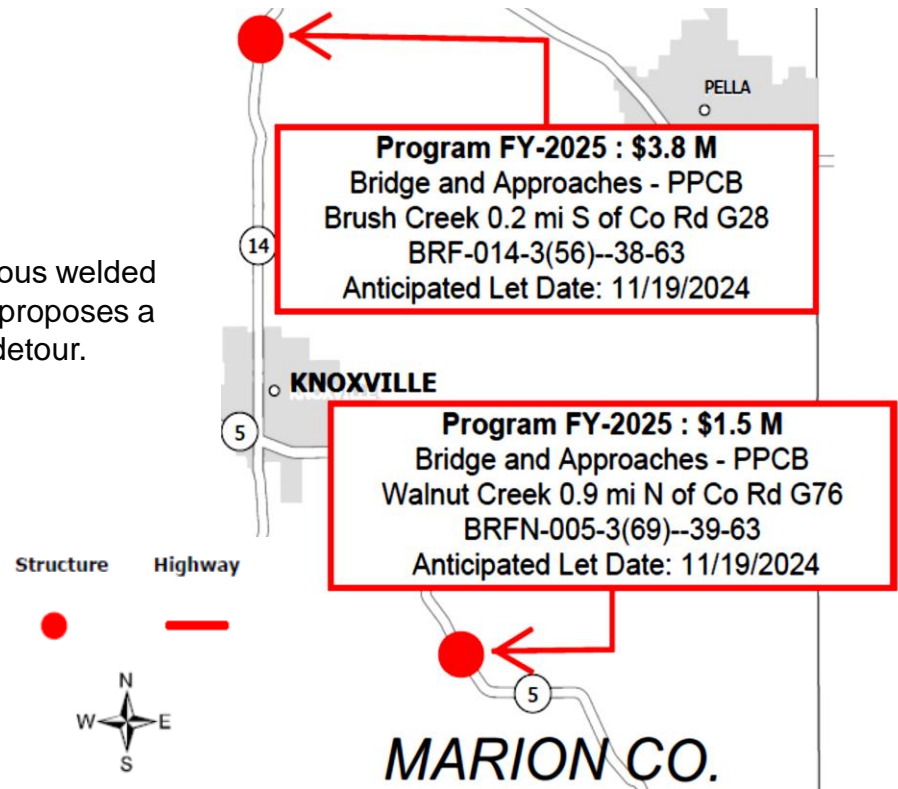
Left Profile (69)

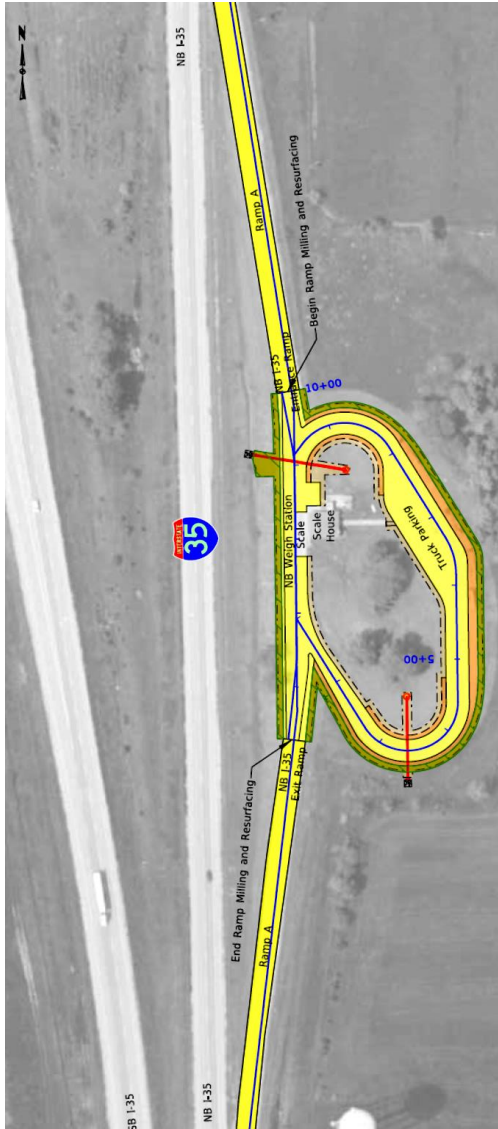


Right Profile (69)

This project involves the replacement of the 48' X 30' concrete beam IA 5 bridge over Walnut Creek reconstructed in 1962. The concept proposes a 100' X 40' PPCB bridge. Traffic will be maintained by an off-site detour.

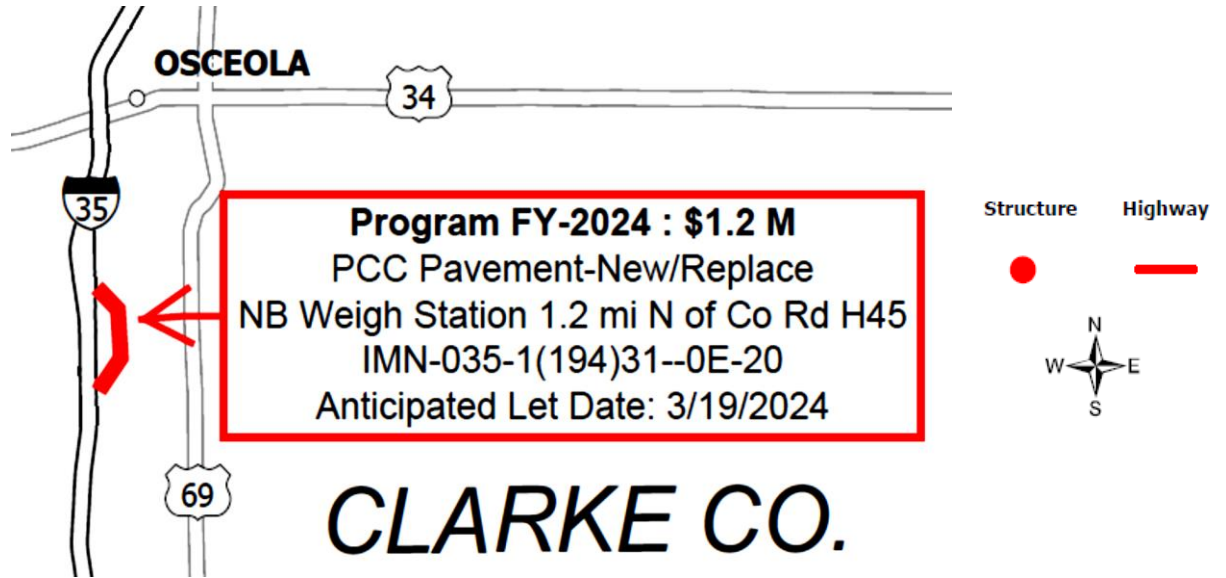
Total Programmed FY-25: \$5.3 Million





Programmed FY-24: \$1.2 Million

I-35 NB Weigh Station



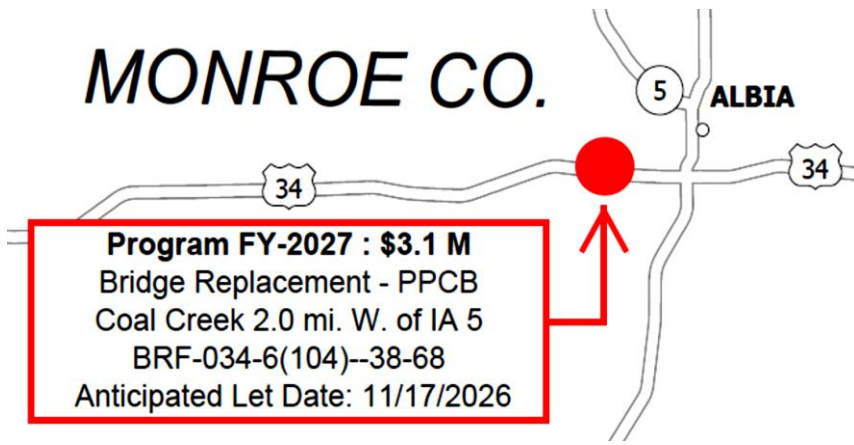
CLARKE CO.

This project will include the removal and replacement of the existing pavement surrounding the scale pit, the parking area pavement (which includes 3 truck stalls), and the entrance and exit loops for the parking area.

Programmed FY-27: \$3.1 Million

U.S. 34 Bridge over Coal Creek

MONROE CO.



Left Profile



Right Profile

Structure Highway



This project involves the replacement of the existing 150' x 30' steel beam bridge, built in 1964, on U.S. 34 over Coal Creek. The concept proposes a 199' x 44' PPCB bridge.

The concept proposes traffic to be maintained by staged construction.

Programmed FY-25 to FY-27: \$27.9 Million

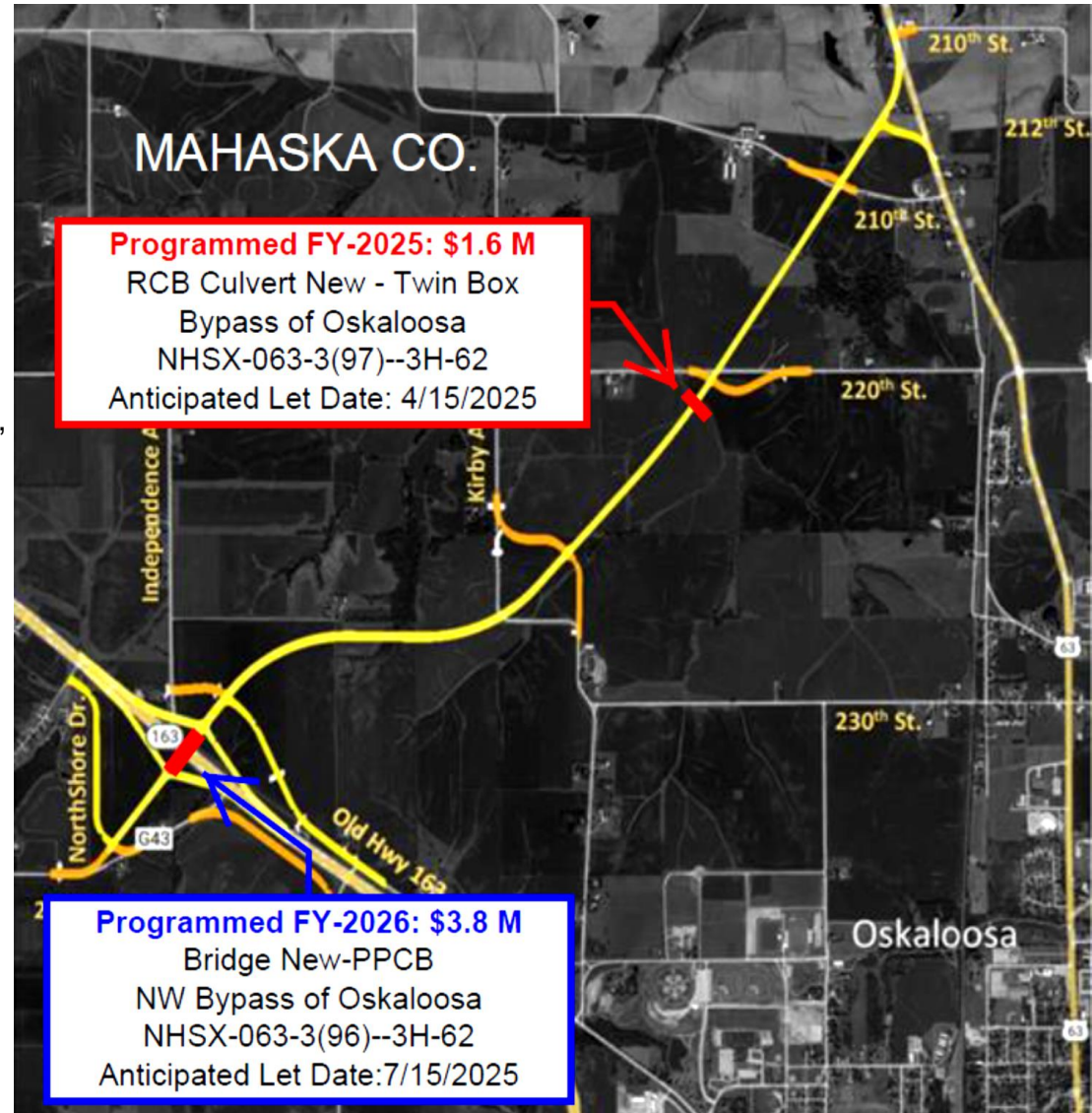
U.S. 63 Oskaloosa Bypass

A new 3.6 mile long undivided 24-foot wide 2-lane highway on new alignment. The NW Bypass will run diagonally from a new interchange at IA 163, west of Oskaloosa, and connect to existing U.S. 63 at 210th Street.

New 10' x 10' x 103' RCB Culvert
Programmed: FY 2025 - \$1.6 M
 Let date anticipated: 4/15/2025
 NHSX-063-3(97)--3H-62

New Interchange 312' X 60' PPCB Bridge
Programmed: FY 2025 - \$3.8 M
 Let date anticipated: 7/15/2025
 NHSX-063-3(97)--3H-62

Highway Pavement (type TBD)
Programmed: FY 2027 - \$22.5 M
 Let date anticipated: 12/15/2026
 NHSX-063-3(98)--3H-62



ICPA 2024 – Iowa DOT District 5

The project involves replacement of the **U.S. 34 bridge**, 150' x 30' Continuous Steel I-Beam Bridge, built in 1960, **over S. Avery Creek.**



The concept proposes to replace it with 249' x 44' PPCB Bridge.

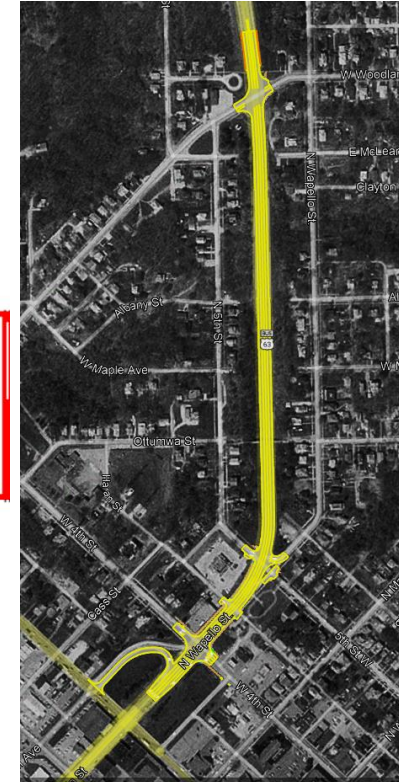
US 34 will be closed during construction and an offsite detour will be utilized.

Programmed FY-2025: \$3.2 Million
Bridge Replacement - PPCB
South Avery Creek 0.7 mi E of Co Rd T61
BRF-034-7(148)--38-90
Anticipated Let Date:10/15/2024

Programmed FY-2026: \$1.1 Million
PCC Pavement - Grade and New
Abandoned RR 4.8 mi N of Co Rd J15
(Bridge Removal)
BRF-063-2(172)--38-90
Anticipated Let Date:12/16/2025

Programmed FY-2027: \$4.1 Million
PCC Pavement - Grade and Replace
Des Moines River Bridge to
W. Woodland Ave in Ottumwa
STP-149-1(88)--2C-90
Anticipated Let Date:10/20/2026

WAPELLO COUNTY



The project involves removal of the **U.S. 63 bridge**, 150' X 30" steel beam bridge, built in 1964, **over an abandoned railroad.**



The concept proposes to place a 150' x 72' diameter 4000D reinforced concrete pipe underneath the existing structure.

Traffic will be maintained via staged construction.

The project involves the PCC reconstruction of **IA 149** and reconfiguration of on/off ramps south of 4th Street and 5th Street intersection in **Ottumwa.**

During construction of IA 149, traffic will be placed head-to-head in either the NB or SB lanes while the other half of the road undergoes construction.

Total Programmed FY-25: \$5.7 Million

U.S. 63 Bridge over Middle Chequest Creek



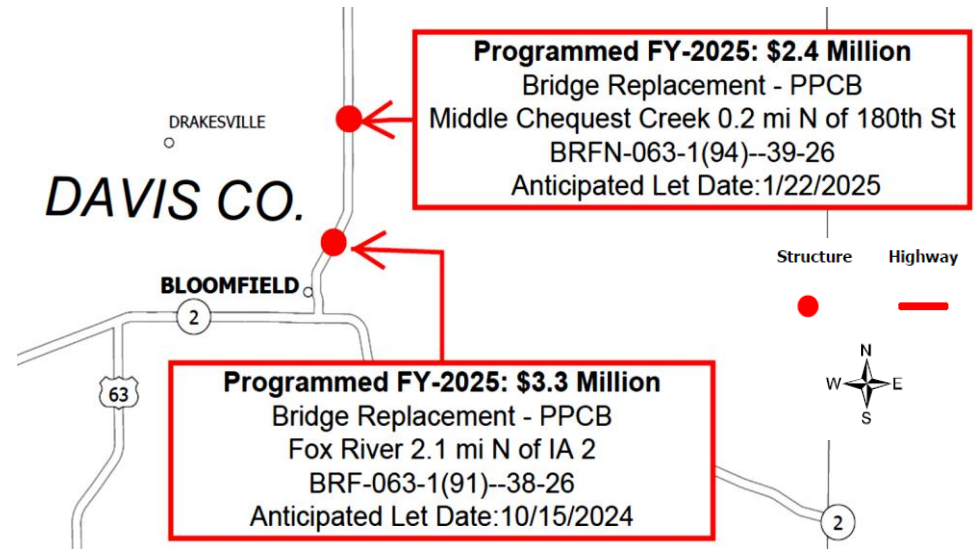
Right Profile (94)



Looking South (94)

The project will replace the existing 3 span 150' x 30' PPCB U.S. 63 bridge over Middle Chequest Creek, built in 1963, with a 172' x 44' PPCB bridge.

At least one lane of traffic in both directions shall be maintained on US 63 at all times.



U.S. 63 Bridge over Fox River



Left Profile (91)



Looking South (91)

The project will replace the existing 215' X 26' steel girder U.S. 63 bridge over Fox River, built in 1948, with a 224' X 44' PPCB bridge.

Traffic shall be maintained on US 63 at all times by staged construction with temporary signals allowing one lane of traffic.

U.S. 218 Bridge over North Fish Creek NB



Left Profile (155)

Looking South (155)

The project will replace the NB 3-span 163' x 30' PPCB bridge over N. Fish Creek, built in 1963, with a 184' X 40' PPCB bridge.

There will be no off-site detour. Traffic will be open through median crossovers

U.S. 218 Bridge over South Fish Creek NB

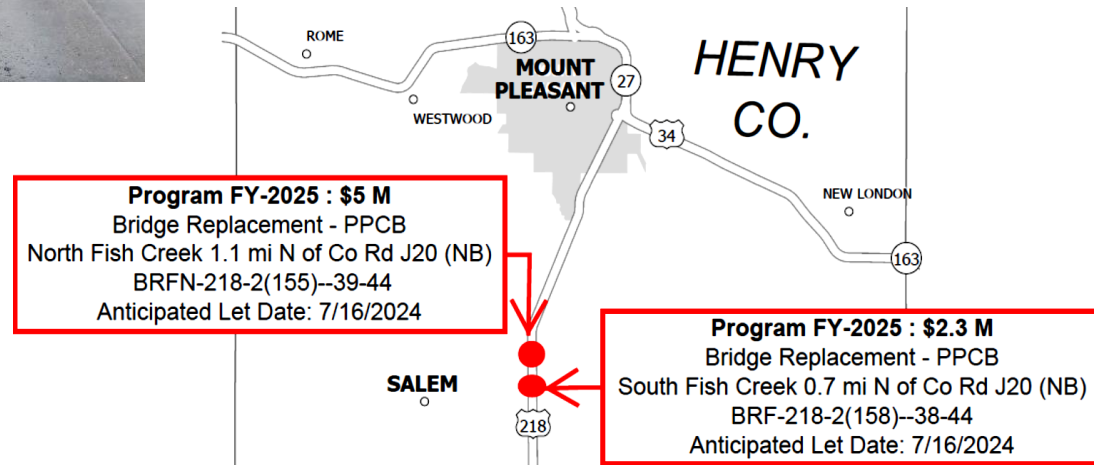


Left Profile (158)

Looking North (158)

Totaled Programmed FY-25: \$7.3 Million

U.S. 218 NB Bridges over North and South Fish Creek

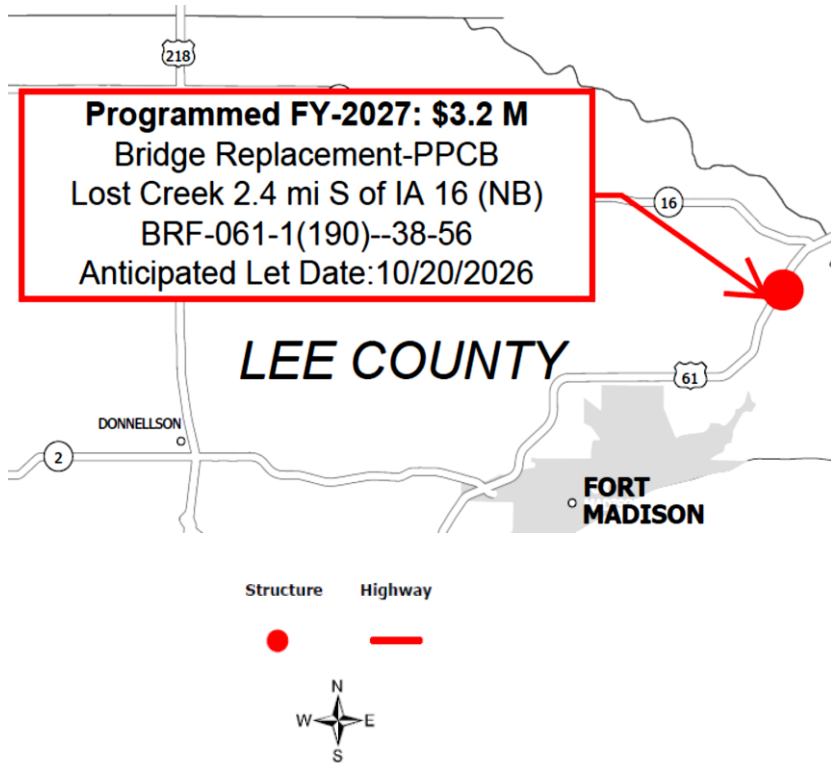


The project will replace the NB 3-span 220' x 30' continuous welded plate girder bridge over S. Fish Creek, built in 1964, with a 214' X 40' PPCB bridge.

There will be no off-site detour. Traffic will be open through median crossovers.

Programmed FY-27: \$3.2 Million

U.S. 61 Bridge over Lost Creek



Profile Right

Profile Left



Roadway With Route, Looking North

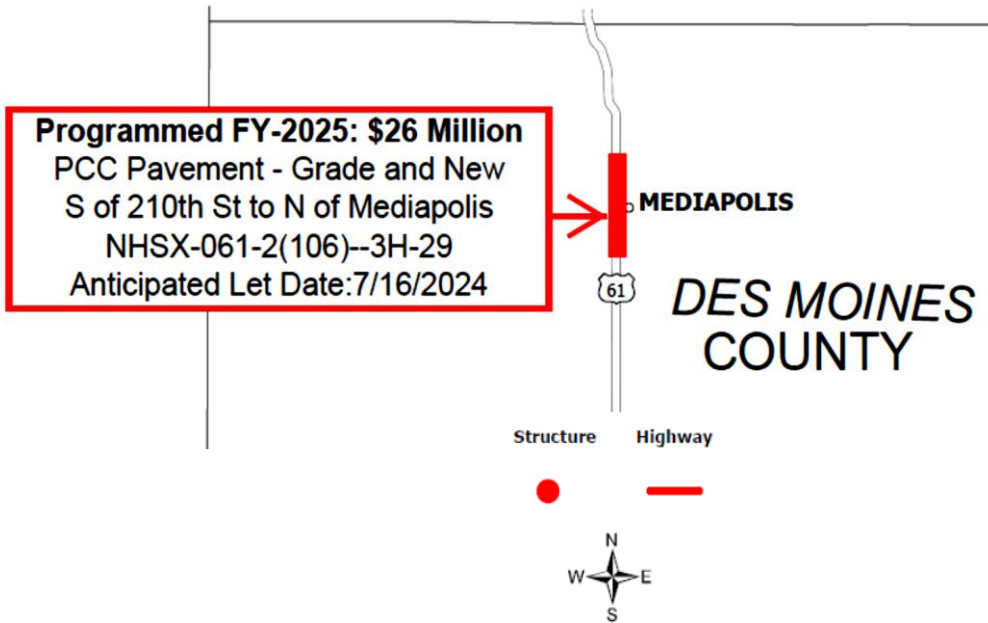
Roadway Against Route, Looking South

The project involves replacement of the existing U.S. 61 northbound 203' x 30' Continuous I-Beam Bridge built in 1966. The concept proposes to replace it with a 220' x 40' three span, PPCB bridge.

One lane of traffic in each direction will need to be maintained via median crossovers.

Programmed FY-25: \$26 Million

New U.S. 61: Section 2 Interchange and Four-Lane Highway



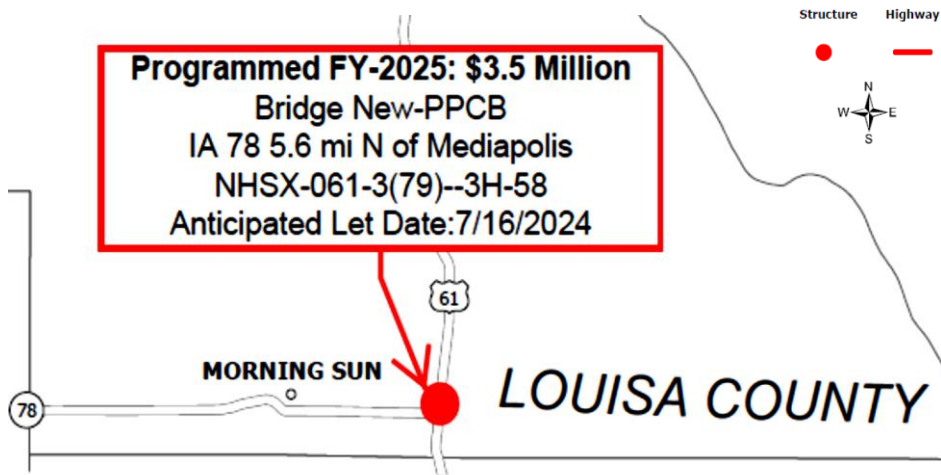
U.S. 61 - Section 2: A new 3.17 mile four-lane divided highway including a grade separated diamond interchange around the west side of the City of Mediapolis at County Road H-38.

Anticipated opening to traffic in 2025.



Programmed FY-25 & FY-26: \$36.3 Million

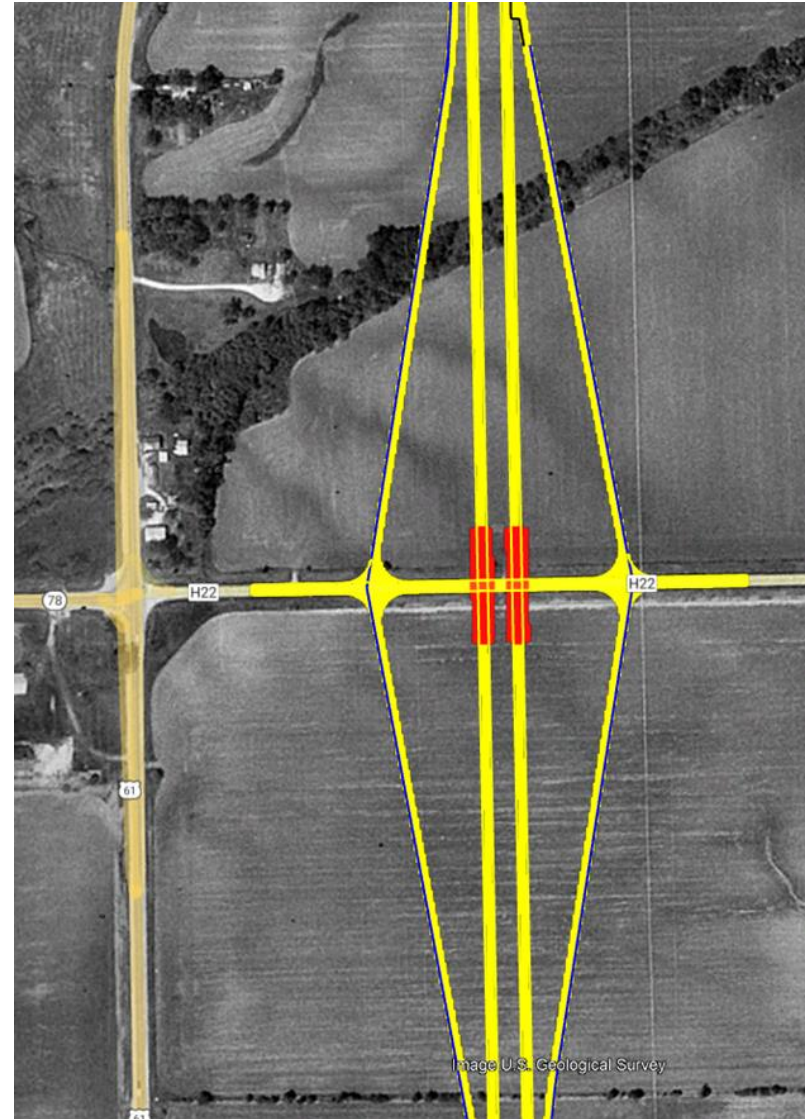
New U.S. 61: Section 3
Interchange and Four-Lane Highway



U.S. 61 - Section 3: The bridge project is part of a grade separated interchange at IA 78 / Louisa County Highway 22. The bridge concept proposes SB and NB 189" X 40" PPCB bridges.

Also planned is a new 5.59 mile four-lane divided highway, north of Mediapolis to 0.5 miles north of IA 78.

Highway Pavement (Type TBD)
Programmed FY 2026 - \$32.8 M
 Let date anticipated: 7/15/2025.
 NHSX-061-2(110)--3H-29



Louisa County

Programmed FY-26 & FY-28: \$137 Million

New U.S. 61 – Section 4 Interchange and Four-Lane Highway

U.S. 61 - Section 4: A new approx. 11 mile four-lane divided highway including a grade separated diamond interchange around the west side of the City of Wapello at Louisa County Road G-62.

Program FYs are Subject to Change

Bridges & Culverts

Programmed FY 2026 - \$18.5 M

Let date anticipated: 1/21/2026.

NHSX-061-3(64)--3H-58

Grading

Programmed FY 2026 - \$41.2 M

Let date anticipated: 1/21/2026

NHSX-061-3(63)--3H-58

Highway Pavement (Type TBD)

Programmed FY 2028 - \$77.3 M

Let date anticipated: 12/21/2027

NHSX-061-3(65)--3H-58

Iowa Rlvr Brdge (SB)
(NEW)

Muskrat Lake
Dual Bridges (NEW)

Iowa River Overflow
Dual Bridges (NEW)

Mills Race Creek
Dual Bridges (NEW)

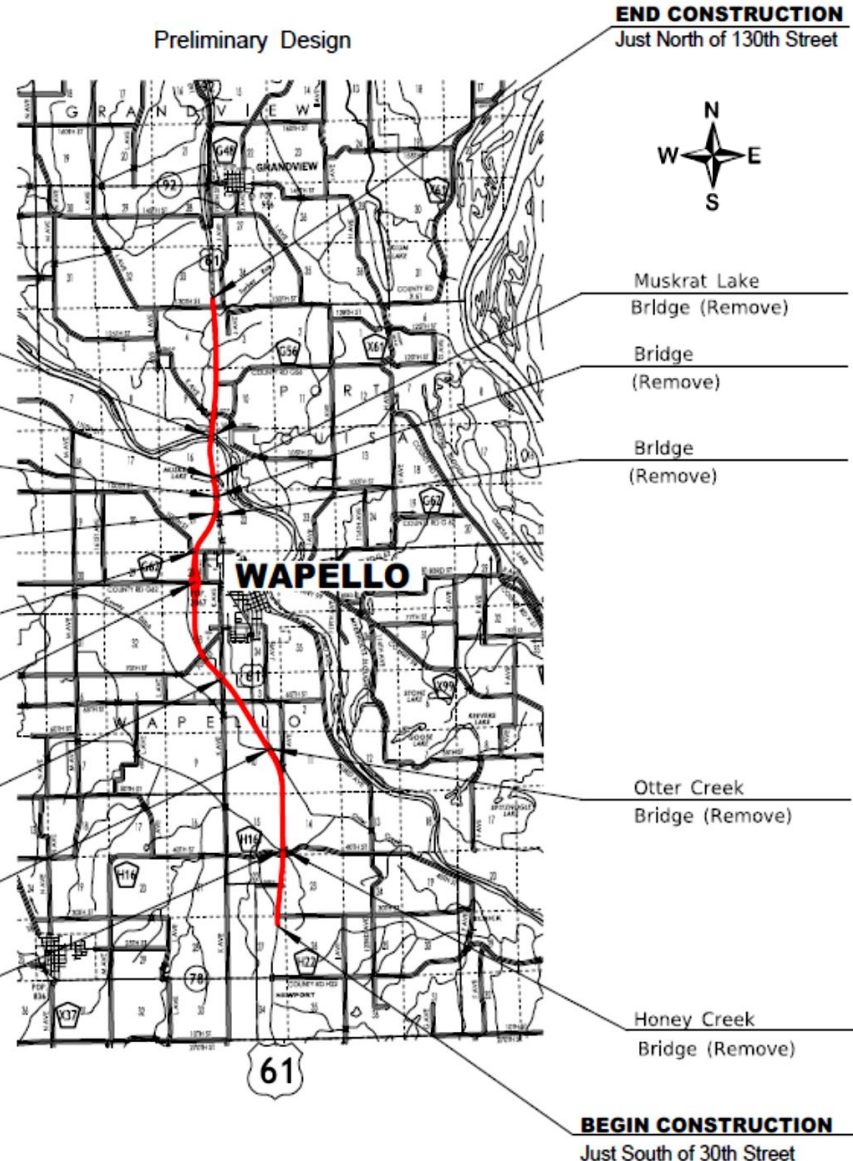
100th St.
Dual Bridges (NEW)

Co. Rd. G62
Dual Bridges (NEW)

K Ave.
Dual Bridges (NEW)

Otter Creek
Dual Bridges (NEW)

Honey Creek
Dual Brldges (NEW)

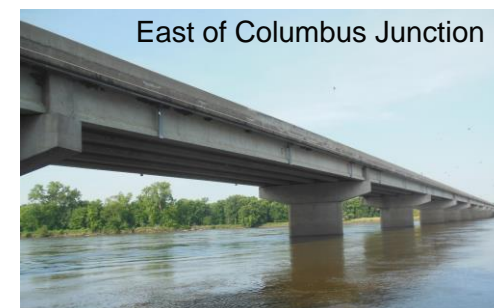


District Wide Bridge Deck Overlays Project Estimated Costs X \$1000	FY-25	FY-26	FY-27	FY-28
No. of Bridge Overlay Projects	6	9	8	8
Total Combined Programmed Amount	\$17	\$7.5	\$8.4	\$8

Noteworthy Bridge Deck Overlay Projects

- ❖ Marion County - Program FY-25 - \$11 M
 - IA 14 Bridge over Des Moines River and Reservoir
 - BRF-014-3(60)--38-63
 - Anticipated Let date 11/19/2024
 - Traffic Control: Off-site Detour

- ❖ Louisa County - Program FY-28 - \$3.7 M
 - IA 92 Bridge over Iowa River 0.5 mi E of IA 70
 - BRF-092-9(171)--38-58
 - Anticipated Let date 01/19/2028
 - Concept Ongoing



Non-Programmed Projects with Unknown Pavement Type Target FY 2027-2029 Five Year Program

Project Estimated Costs X \$1000

County	RTE	Location	Number	Anticipated Let Date	Type of Work	FY-27	FY-28	FY-29
Lee	U.S. 61	From MO State line to U.S. 218	NHSX-061-1(192)--3H-56	10/17/2028	Unknown Pavement - Reconstruction			\$7,940
Marion	IA 14	N of Kermit Dr. in Knoxville to Hayes Dr.	NHSX-014-3(63)--3H-63	10/20/2026	Unknown Pavement - Reconstruction	\$7,000		
Marion	IA 14	Hayes Dr to N of Co Rd G28	NHSX-014-3(64)--3H-63	10/19/2027	Unknown Pavement - Reconstruction		\$6,000	
Wapello	US 34	In Ottumwa, Des Moines River Bridge to RR Bridge	NHSX-034-7(156)--3H-90	10/17/2028	Unknown Pavement - Reconstruction			\$2,339





THANK YOU FOR YOUR TIME AND ATTENTION

Bob Younie, P.E.
District 5 Engineer
Ph.: 641-469-4005
Cell: 515-290-2869
Bob.Younie@iowadot.us

Steve McElmeel, P.E.
Assistant District Engineer
Ph.: 641-469-4003
Cell: 641-919-8553
Steven.McElmeel@iowadot.us